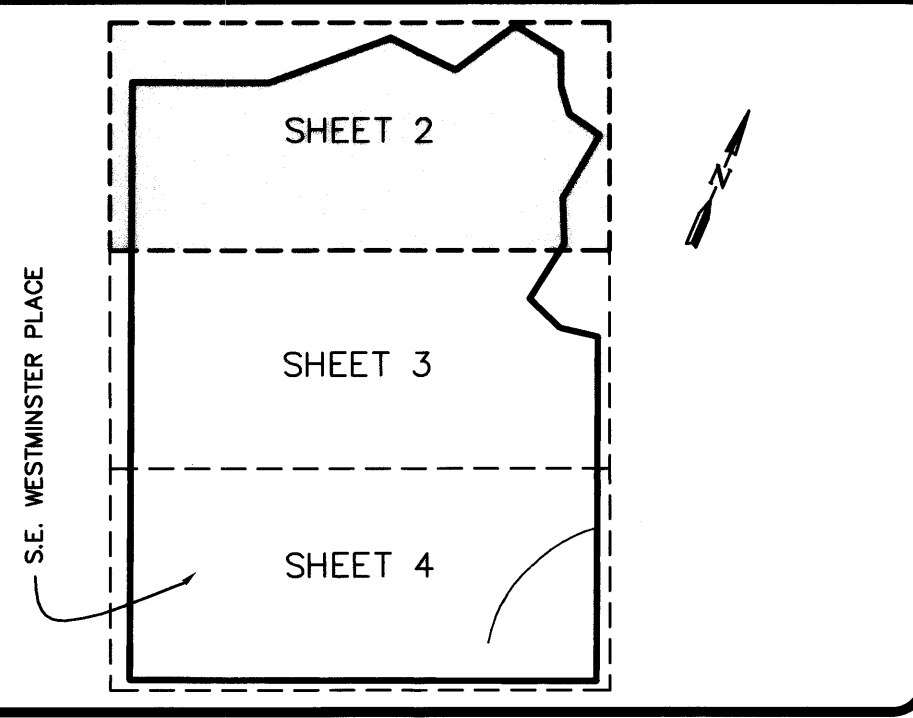


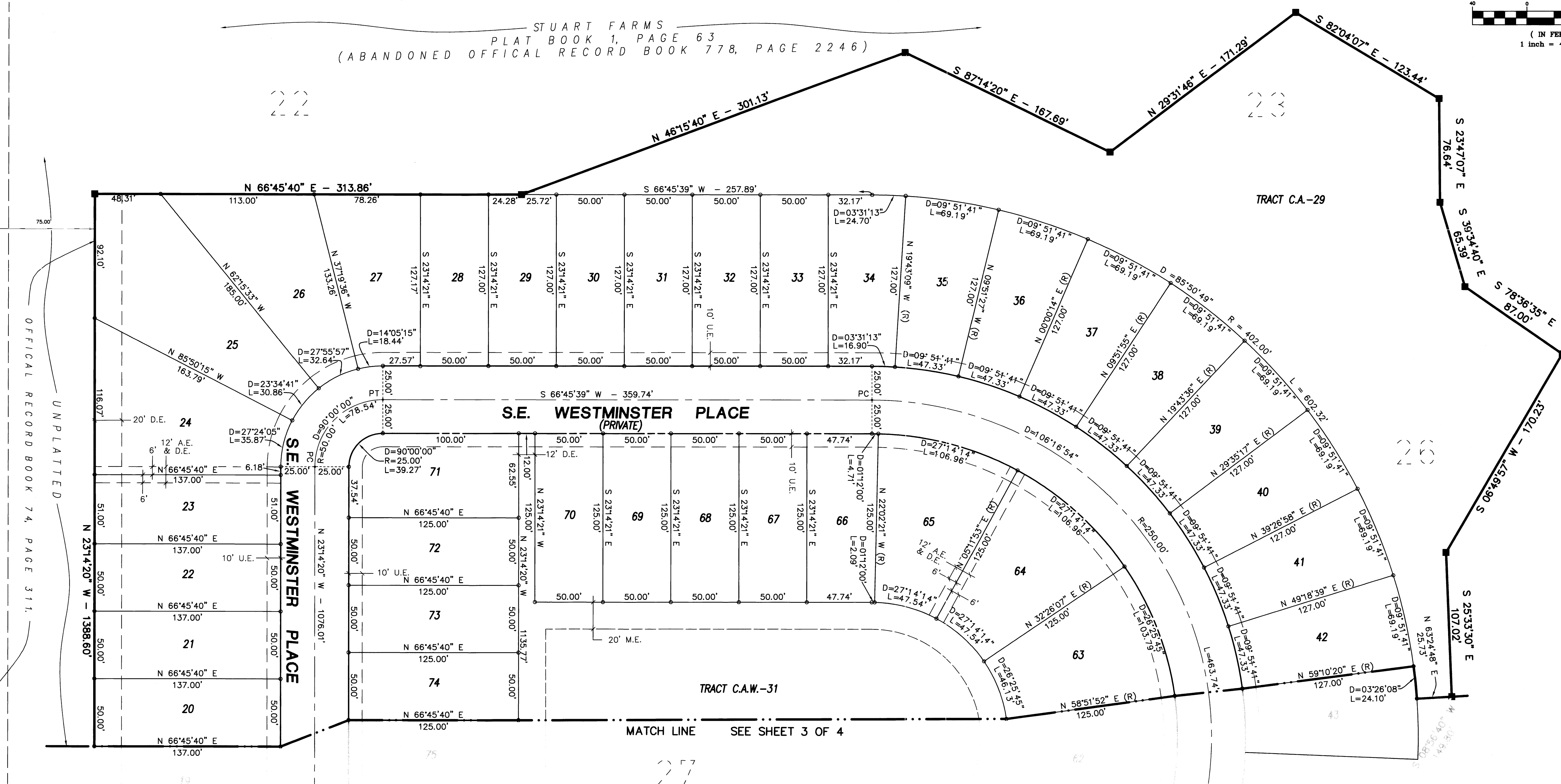
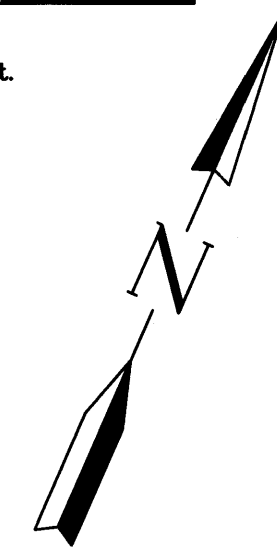
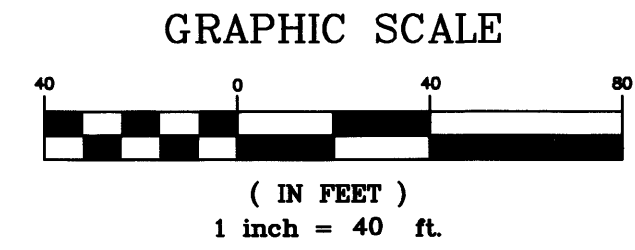
# WILLOUGHBY PLAT NO. 17, A P.U.D.(r)

Being a parcel of land lying in the Hanson Grant, Martin County, Florida and being a replat of Willoughby Plat No. 16, a P.U.D. (r) (Willoughby Glen) as recorded in Plat Book 14, Page 84, public records, Martin County, Florida.

November, 2000



STUART FARMS  
PLAT BOOK 1, PAGE 63  
(ABANDONED OFFICAL RECORD BOOK 778, PAGE 2246)



LEGEND	
●	= SET PERMANENT CONTROL POINT (PCP) PARKER KALON NAIL & WASHER LABELED "GCY LB 4108"
○	= SET 3/4" IRON PIPE WITH YELLOW CAP LABELED "GCY, INC. LB 4108"
■	= SET PERMANENT REFERENCE MONUMENT (PRM) 4"x4" CONCRETE MONUMENT WITH DISK LABELED "GCY INC. P.R.M. LB 4108, PSM 4864"
D	= DELTA (CENTRAL ANGLE)
L	= ARC LENGTH
R	= RADIUS
CB	= CHORD BEARING
A.E.	= ACCESS EASEMENT (PRIVATE)
C.A.	= COMMON AREA
C.A.W.	= COMMON AREA WATER
D.E.	= DRAINAGE EASEMENT (PRIVATE)
LB	= LICENSED BUSINESS
M.E.	= MAINTENANCE EASEMENT
P.C.	= POINT OF CURVATURE
P.R.C.	= POINT OF REVERSE CURVATURE
PSM	= PROFESSIONAL SURVEYOR AND MAPPER
P.T.	= POINT OF TANGENCY
P.U.D.	= PLANNED UNIT DEVELOPMENT
(R)	= RADIAL LINE
U.E.	= UTILITY EASEMENT

- SURVEYOR'S NOTES**
- THIS PLAT, AS RECORDED IN ITS ORIGINAL FORM IN THE PUBLIC RECORDS, IS THE OFFICIAL DEPICTION OF THE SUBDIVIDED LANDS DESCRIBED HEREON AND WILL IN NO CIRCUMSTANCES BE SUPPLANTED IN AUTHORITY BY ANY OTHER FORM OF THE PLAT, WHETHER GRAPHIC OR DIGITAL.
  - THERE MAY BE ADDITIONAL RESTRICTIONS THAT ARE NOT RECORDED ON THIS PLAT THAT MAY BE FOUND IN THE PUBLIC RECORDS OF THIS COUNTY.
  - THERE SHALL BE NO BUILDING OR ANY OTHER KIND OF CONSTRUCTION, OR PLACEMENT OF TREES OR SHRUBS ON DRAINAGE EASEMENTS.
  - BEARINGS SHOWN HEREON ARE REFERENCED TO THE NORTH LINE OF FISHERMAN'S COVE SECTION 2, PHASE 2A, AS RECORDED IN PLAT BOOK 8, PAGE 20, PUBLIC RECORDS, MARTIN COUNTY, FLORIDA. SAID LINE BEARS SOUTH 66°36'26" WEST.
  - ACCESS TO WILLOUGHBY PLAT NO. 17, A P.U.D. (r) WILL BE PROVIDED BY SEPARATE INSTRUMENT. AS RECORDED IN OFFICIAL RECORD BOOK 1422, PAGE 697, PUBLIC RECORDS OF MARTIN COUNTY, FLORIDA.

Job Number 99-1019-01-01  
Licensed Business #4108